

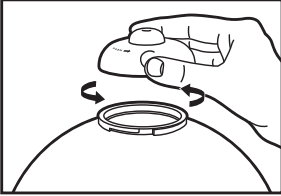
3+



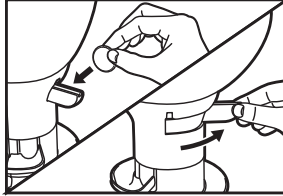
# LIGHT-UP SPIRAL GUMBALL BANK

## INSTRUCTIONS

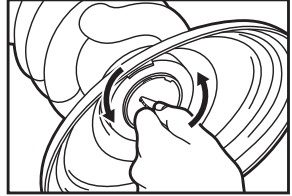
Clean inside globe, cap and spiral rail before use.  
Wipe with damp cloth and dry thoroughly before use.  
**DO NOT IMMERSE IN WATER!** To remove globe turn counter-clockwise.



**TO FILL:**  
Open and remove top cover to fill with gumballs, replace cover.

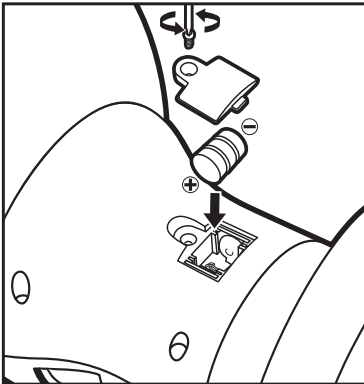


**TO OPERATE:**  
Insert coin into slot. Slide coin slot to the right then back to left. Gumball will release and light-show will start.



**TO ACCESS YOUR STASH:**  
Use coin to turn door on bottom counter-clockwise. To replace door turn clockwise.

## Battery Replacement



ATTENTION TO PARENTS : BATTERIES ARE HARMFUL IF SWALLOWED, SO KEEP AWAY FROM YOUNG CHILDREN. PLEASE RETAIN THIS PACKAGING FOR FUTURE REFERENCE.

READ INSTRUCTIONS CAREFULLY BEFORE INSERTING OR REPLACING BATTERIES. REPLACEMENT OF BATTERIES SHOULD BE DONE BY AN ADULT. SWITCH TOY OFF BEFORE INSERTING OR REPLACING BATTERIES. NON-RECHARGEABLE BATTERIES ARE NOT TO BE RECHARGED. RECHARGEABLE BATTERIES ARE ONLY TO BE CHARGED UNDER ADULT SUPERVISION. DIFFERENT TYPES OF BATTERIES OR NEW AND USED BATTERIES ARE NOT TO BE MIXED. ONLY BATTERIES OF THE SAME OR EQUIVALENT TYPE AS RECOMMENDED ARE TO BE USED. BATTERIES ARE TO BE INSERTED WITH THE CORRECT POLARITY. EXHAUSTED BATTERIES ARE TO BE REMOVED FROM THE TOY. THE SUPPLY TERMINALS ARE NOT TO BE SHORT-CIRCUITED. RECHARGEABLE BATTERIES ARE TO BE REMOVED FROM THE TOY BEFORE BEING CHARGED.

**TO INSTALL, REMOVE OR REPLACE BATTERIES:**  
Remove screw and battery compartment cover and install, remove or replace THREE AG10 OR LR54 OR LR1130 BUTTON CELL BATTERIES following the position indicated. Replace the battery compartment cover and screw.



### WARNING:

Replacement of batteries should be done by an adult.  
Do not mix old batteries and new batteries.  
Do not mix alkaline, standard or rechargeable batteries.  
Do not dispose of batteries in fire, batteries may explode or leak.  
Do not attempt to open battery outer casing.

**ATTENTION:** The batteries included in this unit are also intended for in-store demonstration. Must install three AG10 or LR54 or LR1130 button cell batteries for proper operation.

COLORS AND STYLES MAY VARY

Meets CPSC Safety Requirements

CHECK OUT OUR WEBSITE:  
[imperialtoy.com](http://imperialtoy.com)



PLEASE RECYCLE

Printed in China



0.1 W



3 X 1.5 V  
= 4.5 V

IMPERIAL TOY LLC.  
NORTH HILLS, CA 91343  
© 2015 IMPERIAL TOY LLC.

