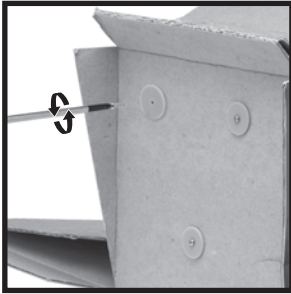




# Octopus Party Machine

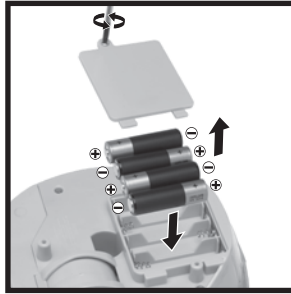


## #1 To Prepare:



Separate Party Machine from package by removing screws. Discard screws and plastic washers.

## #2 To Install Batteries:



Remove screw and battery compartment cover.  
-Install 4AA Alkaline batteries.  
-Replace battery compartment cover and screw close.  
-To ensure best performance install fresh AA alkaline batteries.

## #3 To Fill:



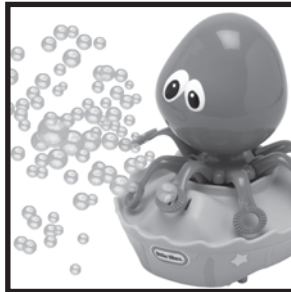
Remove cap and seal from your 8 fl oz. (236.57 mL) Little Tikes® bubble bottle. To fill your Party Machine slowly pour solution in the reservoir on the back of your Party Machine. Stop pouring once you see the reservoir is full.

## #4 To Begin:



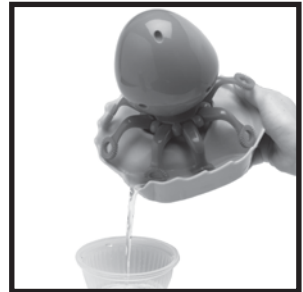
On the side of your Party Machine is an on/off switch. To begin switch on.

## #5 To Play:



Allow the Party Machine about 1-2 minutes to coat the wands with bubble solution. Once wands are fully coated your Octopus will blow a steady stream of bubbles. To stop bubbles switch off!

## #6 To Store:



To drain bubble solution, turn Party Machine sidewise and pour solution from the pour spout on the back of your Party Machine. Fill Party Machine with COLD WATER and operate for 30 seconds allowing the water to rinse out your Party Machine. Drain water, towel dry and store. Remove batteries for long term storage.



**IMPERIAL TOY LLC.**

NORTH HILLS, CA 91343

FOR CONSUMER HELP CALL: 1-877-762-8253

KEEP THIS ADDRESS FOR REFERENCE.

VISIT OUR WEBSITE: [IMPERIALTOY.COM](http://IMPERIALTOY.COM)

[www.littletikes.com](http://www.littletikes.com)



© The Little Tikes Company, an MGA Entertainment company. LITTLE TIKES® is a trademark of Little Tikes in the U.S. and other countries. All logos, names, characters, likenesses, images, slogans, and packaging appearance are the property of Little Tikes. Used under license by Imperial Toy LLC. © 2015

Made In China



## HELPFUL HINTS!

1. Make sure you always have enough Little Tikes® bubble solution to fill your Party Machine.
2. Party Machine work best with Little Tikes®, Miracle® Bubbles, or Super Miracle® Bubbles solution.
3. Be patient. For tons of bubbles you must allow time for solution to fully coat the bubble wands.
4. To ensure best performance, always make sure to replace batteries with fresh AA Alkaline batteries at the first sign of wear.

ADULT ASSEMBLY IS REQUIRED - THERE ARE SMALL PARTS BEFORE ASSEMBLY. PLEASE KEEP AWAY FROM CHILDREN BEFORE ASSEMBLY.

IF SOLUTION GETS INTO EYES, RINSE IMMEDIATELY WITH WATER. DO NOT DRINK. NOT A FOOD ITEM. Colors And Styles May Vary Meets CPSC Safety Requirements

READ INSTRUCTIONS CAREFULLY BEFORE INSERTING OR REPLACING BATTERIES. REPLACEMENT OF BATTERIES SHOULD BE DONE BY AN ADULT. SWITCH TOY OFF BEFORE INSERTING OR REPLACING BATTERIES. NON-RECHARGEABLE BATTERIES ARE NOT TO BE RECHARGED. RECHARGEABLE BATTERIES ARE ONLY TO BE CHARGED UNDER ADULT SUPERVISION. DIFFERENT TYPES OF BATTERIES OR NEW AND USED BATTERIES ARE NOT TO BE MIXED. ONLY BATTERIES OF THE SAME OR EQUIVALENT TYPE AS RECOMMENDED ARE TO BE USED. BATTERIES ARE TO BE INSERTED WITH THE CORRECT POLARITY. EXHAUSTED BATTERIES ARE TO BE REMOVED FROM THE TOY. THE SUPPLY TERMINALS ARE NOT TO BE SHORT-CIRCUITED. ATTENTION TO PARENTS : BATTERIES ARE HARMFUL IF SWALLOWED, SO KEEP AWAY FROM YOUNG CHILDREN. PLEASE RETAIN THIS PACKAGING FOR FUTURE REFERENCE.